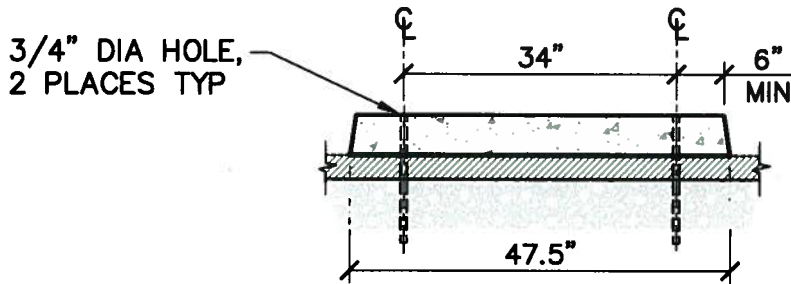


SECTION



ELEVATION

NOTE:

1. CONCRETE WHEEL STOPS SHALL BE PRECAST CONCRETE WITH A MINIMUM COMPRESSIVE STRENGTH OF 4,000 PSI AT 28 DAYS.
2. WHEEL STOPS SHALL BE REINFORCED WITH A MINIMUM OF TWO #4 BARS OR FOUR #3 BARS.
2. PROVIDE A MINIMUM OF TWO 3/4" DIA. HOLES FOR REBAR ANCHORS AT AC OR AB PAVEMENT.
3. ANCHOR WHEEL STOP AT AC OR AB PAVING WITH TWO 16" LONG #4 OR 12" LONG #5 BARS .
4. CONCRETE WHEEL STOPS MAY BE AVAILABLE AT BEST CONCRETE STEPS, 820 143rd AVE, SAN LEANDRO, CA 94578 (510) 632-3632.



CONCRETE WHEEL STOP

DRAWN	JY	KEY	REVISIONS	DATE
CHECKED	AS		ORIGINAL ISSUE	12-4-15
OPERATIONS	DC			

APPROVED *[Signature]*
 ROB LIM, PE, CHIEF OF DESIGN & CONSTRUCTION
 DATE 12/16/15

STD PLAN

403

SHEET 1 OF 1
 NOT TO SCALE